

20-Device Mobile AC Charging Trolley for Laptops, Chromebooks and Tablets up to 14" or 17" – Vertical

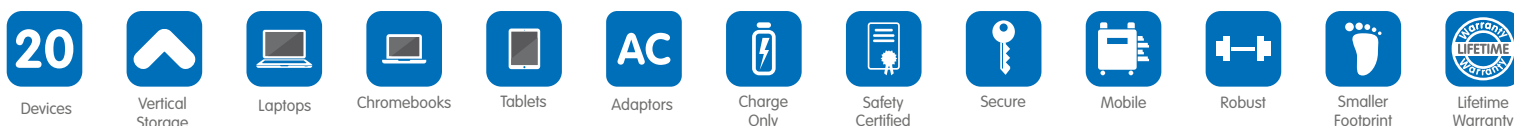
- **The LapCabby Mini 20 Vertical** charges 20 devices up to 14" screen size or 10 devices up to 17" – Chromebooks, laptops and tablets including protective cases.
- **It has sliding shelves** with protective storage boxes that store devices vertically with a specially moulded cable management system built in.
- **It is fast and flexible** with simultaneous charging and a programmable timer.
- **Provides maximum security & safety** with a dual point locking system and separate lockable power compartment.
- **This unit is easy to move** as it has ergonomic top handles, rounded corner bumpers and multi-directional non-marking wheels.
- **The LapCabby Mini 20 Vertical** has silent charging with unique ventilation T and a built-in heat sensor.
- **With Support for Life with Lifetime Warranty** (5 years electrical), shipped fully assembled.



	Code/SKU	Number of devices can hold	Unit Dimensions	Device Compartment Size	AC pocket size
LapCabby Mini 20V	LAPM20VBL	20	W620 x D705 x H1105 mm 24.4" x 27.8" x 43.5"	W360 x D450 x T30mm 14.2" x 17.7" x 2"	W210 x D90 x H210 mm 8.3" x 3.5" x 8.3"

IMPORTANT NOTE: CHECK ACTUAL DEVICE SIZE, INCLUDING POWER CABLE FOR COMPATIBILITY WITH DEVICE COMPARTMENT SIZE. IF IN DOUBT PLEASE CONTACT LAPCABBY FOR CONFIRMATION

Materials	Heavy duty steel frame with strong MFC cladding				
Safety	<p>All products are tested to the highest standard worldwide USA: UL 62368-1:2014 Canada: CAN/CSA C22.2 No. 62368-1:2014 Europe: EN 62368-1:2014</p> <p>Safety testing is a high priority to LapCabby. We don't release any products unless the unit has been completely certified including electrics, materials, construction and components. Leading safety testing house we test the normal operating conditions of the product but also for faults, misuse, temperature, fire risk, electric shock and injury</p>				
Testing certifications	Safety tested to the highest level worldwide     				





Dual point locking
Key system.



Inset door handles.



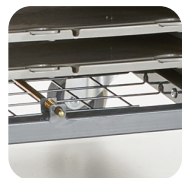
Strong MFC cladding.



Cleverly integrated twisting
cable clips to ensure cables
stay in place.



Devices stored vertically in
protective storage on
sliding shelves.



Fully welded steel frame
with weldmesh base for
constant air flow.



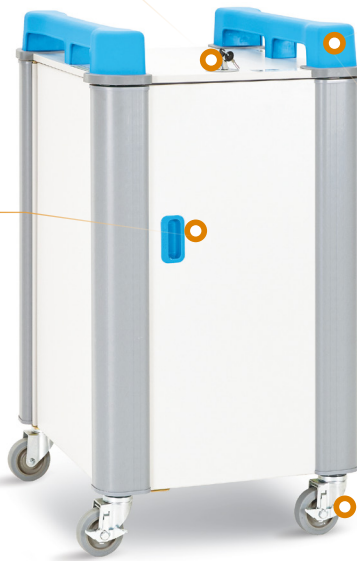
Power 7 Management
System manages the
power consumption.



Cable clip portholes
feed cables.



IEC socket with 1.8m
designed to snap out
if pulled away.



Ergonomic ABS handles.

Rounded corner extrusions
and rubber corners.

Non-marking hospital
grade rubber wheels.



Built-in heat sensor will
shut off power
if a device overheats.

Separate power
compartment opened with
a concealed handle.

Large L-Shape doors
for easy access.



Well placed vents allow
constant air circulation.

Device adaptors plug into
4x5-way power strips.

Individual AC adaptor pockets
are specially designed to keep
cables organised.

